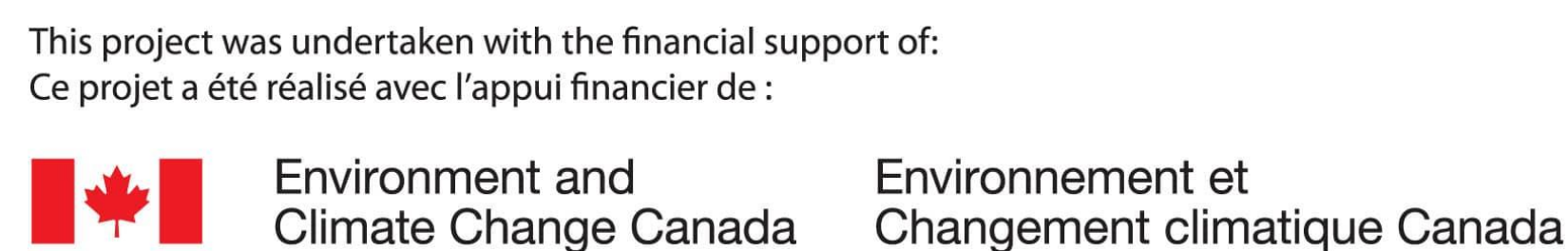


Making Room for Wetlands



PROJECT DESCRIPTION

Making Room for Wetlands (MRFW) is a climate change adaptation and tidal wetland restoration project focused on improving climate resiliency in dykeland communities, infrastructure, and agricultural lands. *MRFW* builds upon the successful implementation of managed realignment and the restoration of 30.1 ha of tidal wetland habitat in the first iteration of the project (2017-2022).

The projects are a partnership between TransCoastal Adaptations: Centre for Nature-Based Solutions at Saint Mary's University, CB Wetlands & Environmental Specialists, the Confederacy of Mainland Mi'kmaq, Carleton University, and the Province of Nova Scotia.

It is funded by:

- DFO's Aquatic Ecosystem Restoration Fund
- ECC's Nature Smart Climate Solutions Fund, and
- the Province of Nova Scotia.

PROJECT GOALS

- Improve overall **dykeland climate resilience**, reducing flood and erosion risks;
- **Assess dykeland sites** in the Bay of Fundy;
- Decrease **greenhouse gas emissions**;
- Increase the **permanency of carbon stocks** in restored and foreshore marshes by providing room for natural landward migration;
- Integrate **Mi'kmaq knowledge** and **Two-Eyed Seeing** into the project framework; and
- Increase the total area of tidal wetland for **biodiversity conservation** and various other co-benefits.

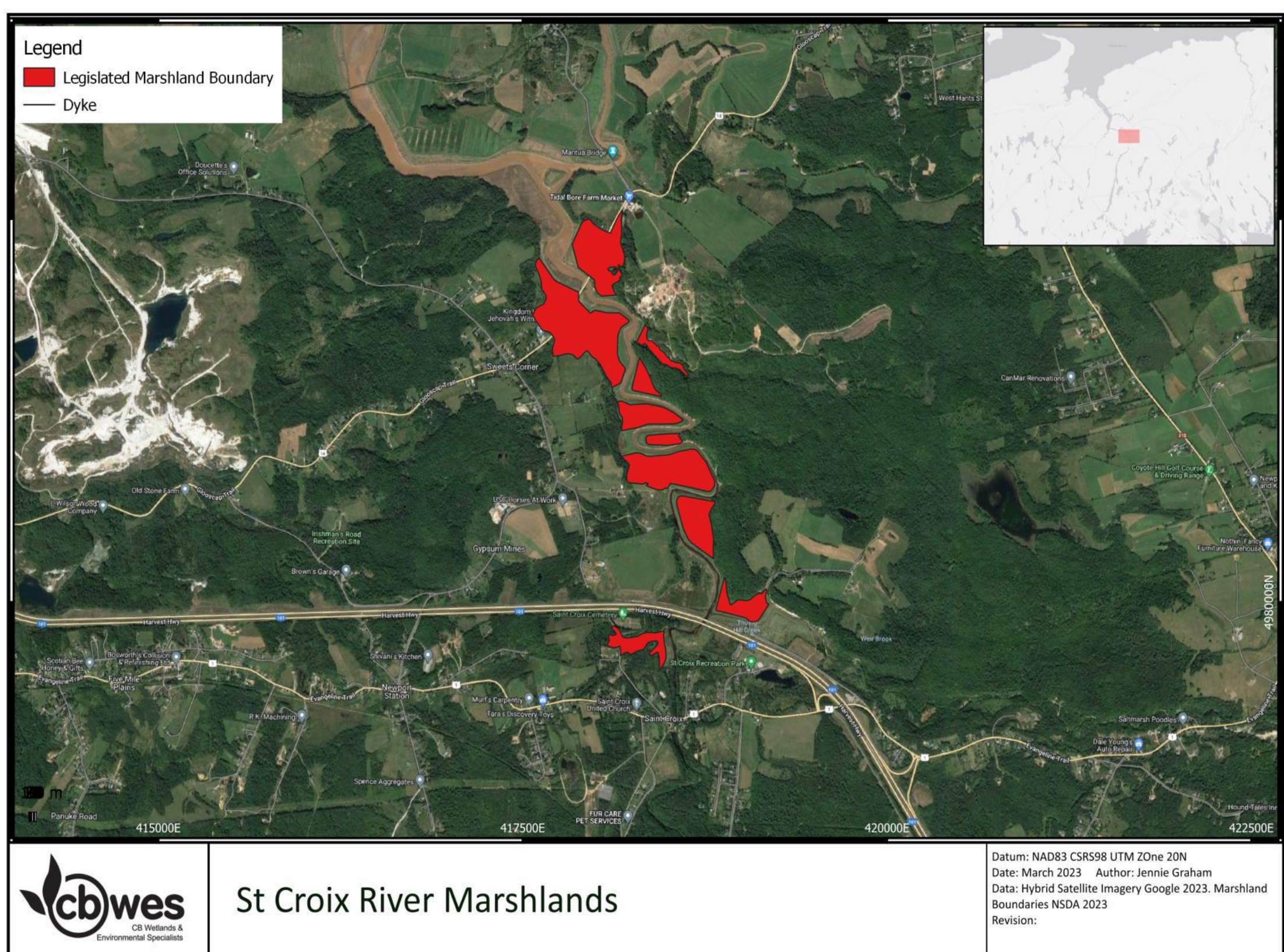
AREAS OF FOCUS

These projects include three main areas of focus:

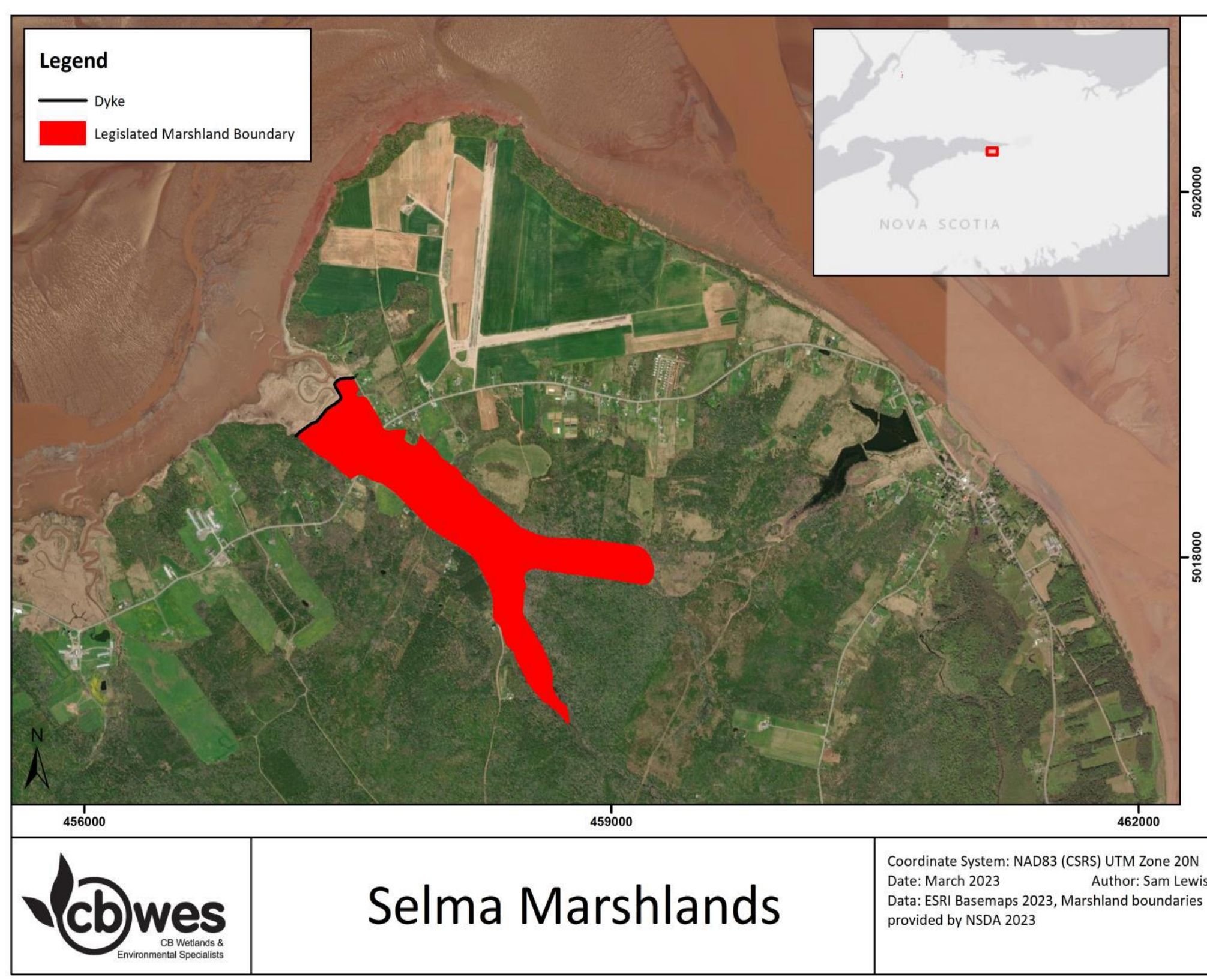
- Tidal wetland restoration in areas currently vulnerable to failure;
- Exploring the removal of vulnerable dyke sections as part of overall managed dyke realignment; and
- Improving agricultural drainage by reshaping fields and upgrading drainage systems.



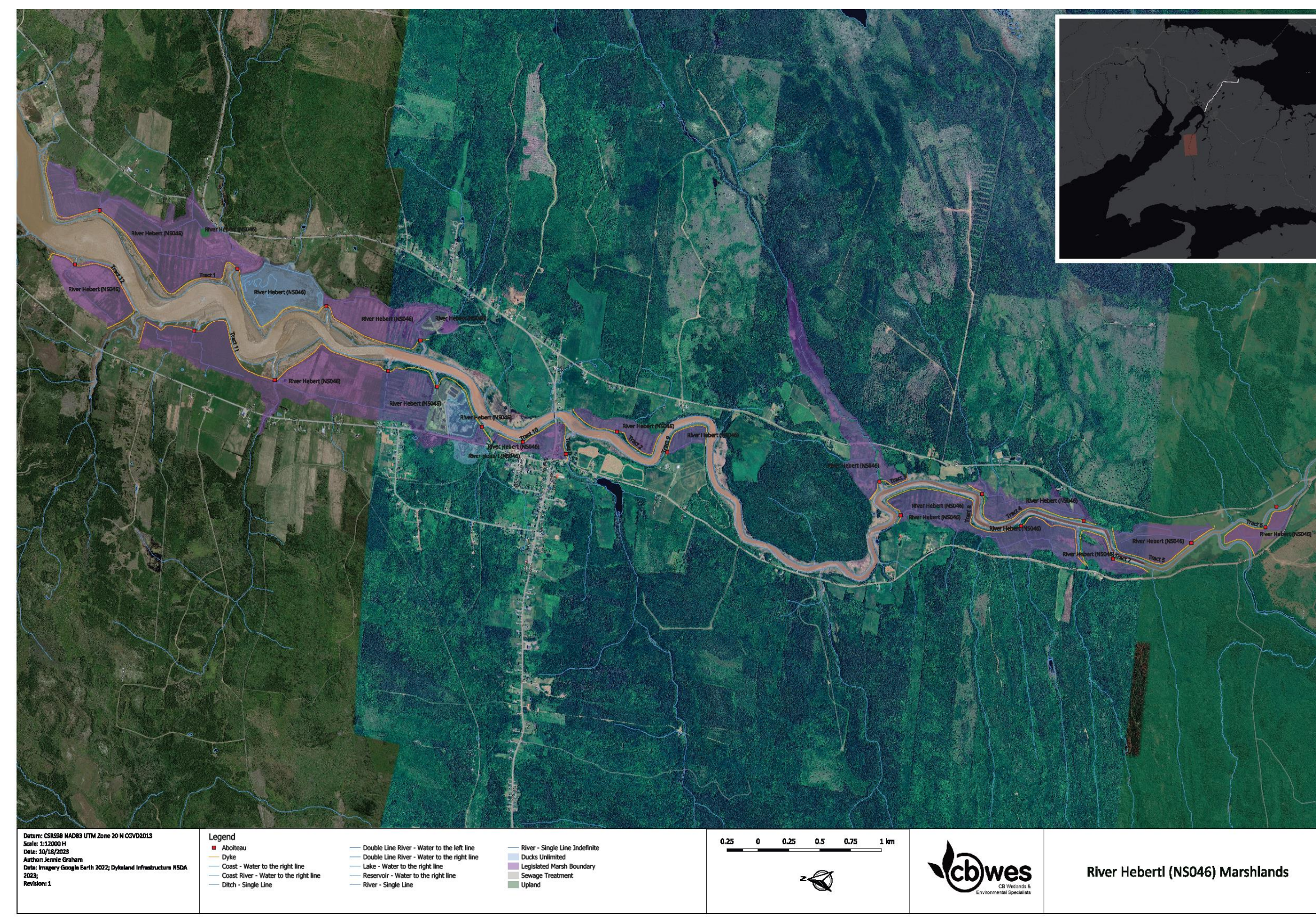
The Belcher Street managed dyke realignment site featuring a new dyke (top right) after the tides were reintroduced in May 2018, and the site two years post-breach (bottom right). The top left shows the site pre-breach and the bottom left image shows the site one-year post-breach (CBWES Inc.).



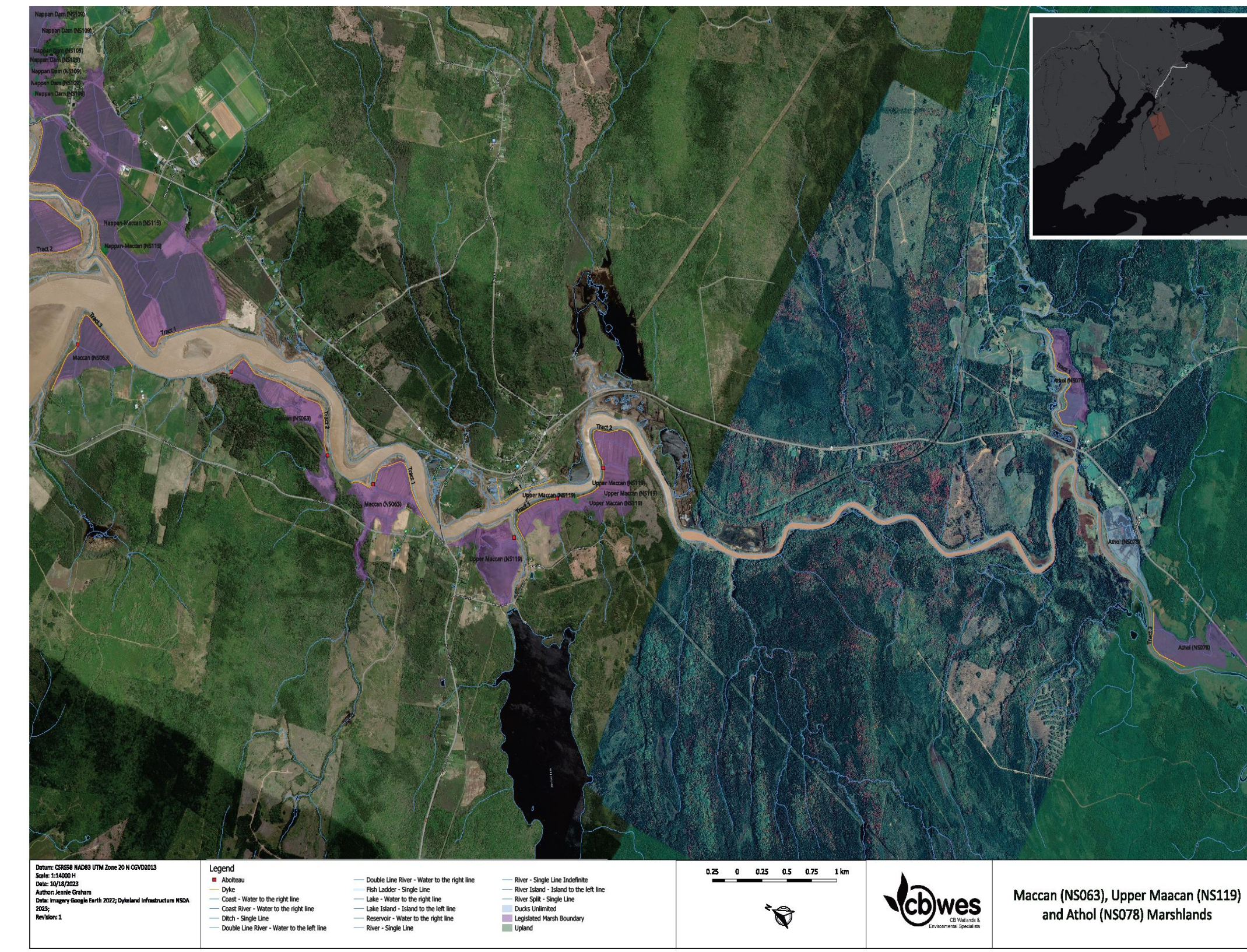
Location map of the legislated marshland boundary of the St Croix river (CBWES Inc.).



Location map of the legislated marshland boundary of the Selma estuary (CBWES Inc.).



Location map of the legislated marshland boundary of the River Hebert estuary (CBWES Inc.).



Location map of the legislated marshland boundaries of Maccan, Upper Maccan, and Athol (CBWES Inc.).

